



FOOTWEAR COLLECTION

SS 2023

LIVE THE MOMENT





INDEX

FIT MANIFESTO 04

APPROACH

SULFUR 06

FIND YOUR ELEMENT 20

ALL MOUNTAIN

MAGMA 22

FIND YOUR ELEMENT 34

TREKKING

FORGE 36

FIND YOUR ELEMENT 42

CLASSIC COLLECTION

KILIMANJARO 46

MAKALU 48



WHY?

WE BELIEVE THAT PRODUCTS MUST ADAPT TO PEOPLE

EACH PERSON IS DIFFERENT.
WE DESIGN PRODUCTS THAT ADAPT TO FIT
EVERY TYPE OF FOOT SHAPE.

HOW?

WE COMBINE ULTIMATE COMFORT AND UNCOMPROMISED PERFORMANCE

ANATOMICAL LAST

Tecnica's shoe design process starts from an anatomical last, rather than a traditional one.

Anatomical Last



VS

Traditional Last



GREAT FIT OUT OF THE BOX

Many shoe brands in the market use traditional lasts to develop their footwear models, in this way they save time and investments.

At Tecnica however, we have always made **fit** a top priority. We do not accept compromises in the development and production process.

This approach makes it possible to design and produce shoes with a unique anatomical shape that delivers a precise wrapping fit, with great heel and forefoot retention.

SULFUR

THE SULFUR IS A FAST-MOVING APPROACH SHOE WITH AN ANATOMICAL, WRAPPING FIT AND GOOD SUPPORT AND ENDURANCE COMFORT. IT DELIVERS GRIP, PRECISION AND CLIMBING PERFORMANCE IN TECHNICAL TERRAIN.



CLIMBING PRECISION



GREAT FIT OUT OF THE BOX ANATOMICAL LAST

The Sulfur upper is built and shaped around a specific anatomical last that delivers a precise, wrapping fit. As a result, the shoe fits like a glove around the foot. Its excellent forefoot and heel retention provide solid support for high performance in even the most technical terrain.

ADAPTIVE SHAPE TECHNOLOGY BUILT AROUND YOUR FOOT

Each foot is unique, this is a fact. Tecnica AST (Adaptive Shape Technology) combines a range of advanced technical solutions. By combining different density adaptive EVA memory foams with pre-shaped thermoplastic inserts and an Ortholite footbed, we deliver a unique, anatomic underfoot construction that adapts to the shape of your foot.



TOE LACING SYSTEM FOR ADJUSTABLE FIT, PRECISION AND PERFORMANCE

The climbing lacing system supports the wrapping fit at the forefoot and toe box and allows for extremely quick and precise lace adjustment.

In addition, it enhances the advanced level of precision and edging when climbing steeper rock.

SUPPORTIVE MIDSOLE STRUCTURE



EDGE FRAME TECHNOLOGY

SUPPORT AND FLEX – EXACTLY WHERE YOU NEED IT

The Edge Frame plate is made of thermoplastic polyurethane (TPU) and we insert it at the core of the shoe, to provide stiffness and support while climbing, while still allowing the shoe to flex freely where needed.

The result: climbing performance meets hiking comfort. The longitudinal elements promote stiffness and torsional rigidity at the toe and midfoot. The cut-out crossways arrangements allow for more flexion in the metatarsal area.



BALANCED CUSHION

The midsole is specifically designed with two different densities.

At the heel, it uses a softer EVA compound – to provide greater cushioning and ground adaptability. This guarantees optimal comfort when walking.

DUAL-DENSITY SUPPORT

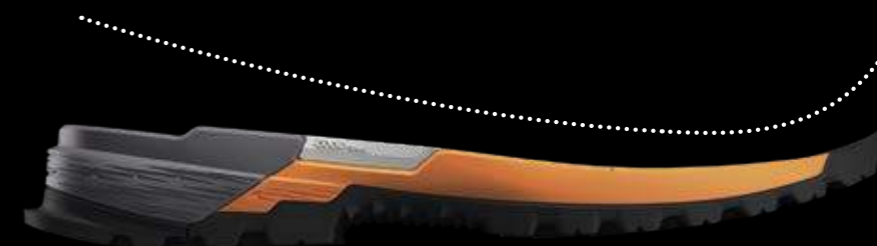
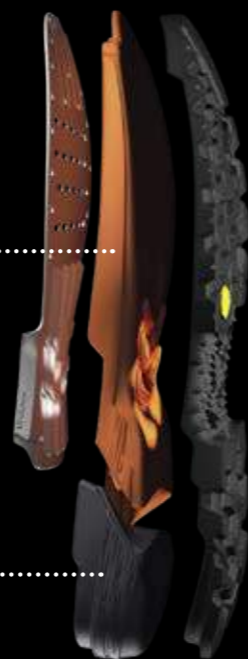
BI-DENSITY COMPRESSION MOLDED EVA

The Sulfur midsole is specifically designed with two different density areas: a higher density area from the midfoot to the toe and a lower density area underneath the heel.

The higher density EVA ensures torsional rigidity and flex stability – adding further support to the Edge Frame technology.

Higher Density
EVA

Lower Density
EVA



FAST TRANSITION

The midsole and outsole rocker profile is built with a precisely-defined shape to promote smoother heel-to-toe transition. As a result, you can go for longer distances with a higher level of comfort.

PRECISE GRIP



CLIMBING GRIP

VIBRAM® MEGAGRIP™ SOLE

The Vibram® Megagrip™ outsole offers unparalleled grip on both dry and wet surfaces. This compound is best-in-class for durability and ground adaptation. The multi-directional lug pattern is ready to take on different terrains and changing conditions.

CLIMBING ZONE

At the toe, the Sulfur outsole has a flat climbing zone. This dedicated climbing-specific feature gives advanced precision, toe and edging power on slabs, ledges and edges, making it the perfect choice for steeper walls.



ARCH GRIP

At the center of the Vibram® outsole, under the arch of the foot is the rubber arch grip. It delivers additional technical performance to the shoe.

The specific shape of its 'teeth' ensures better grip on slippery ridges and raised edges, as well as via ferrata rungs and ladders.



TECHNICAL FEATURES



LIGHTWEIGHT RUBBER RAND

EXTENDED FRONT AND SIDE PROTECTION

At the toes and lateral and medial side of the foot, a lightweight rubber rand provides additional protection and abrasion resistance from boulders, rocks and scree.

BACKLOOP

EASY PULL-ON AND HARNESS ATTACHMENT

The Sulfur features a robust backloop that helps to pull on your shoes.

It also enables quick and secure attachment at the back of your harness.



WATERPROOFNESS AND BREATHABILITY

GORE-TEX®

We use proven upper materials to deliver durably waterproof and breathable weather protection.

The Gore-Tex® extended comfort membrane ensures that your feet stay dry and comfortable all day long and all year round.



SULFUR MEN'S

SULFUR WOMEN'S



¥ 28,000(税別)
¥ 30,800(税込)

¥ 28,000(税別)
¥ 30,800(税込)



SULFUR MS
SOFT GREY - ULTRA ORANGE
COD.: 112505 00 001

• • • •

Upper: 1,5 mm suede leather
Lining: Sock lining construction in soft mesh
Footbed: Anatomical, Ortholite®
Midsole: Bi-density compression molded EVA with high rebound compound

Outsole: Vibram® Megagrip™
Weight: 400 g (8 UK / 9 US)
Sizes: UK 6 - 13,5 / US 7 - 14,5



SULFUR WS
LIGHT GREY - LIGHT LILAC
COD.: 212505 00 001

• • • •

Upper: 1,5 mm suede leather
Lining: Sock lining construction in soft mesh
Footbed: Anatomical, Ortholite®
Midsole: Bi-density compression molded EVA with high rebound compound

Outsole: Vibram® Megagrip™
Weight: 340 g (5 UK / 7 US)
Sizes: UK 3,5 - 8,5 / US 5,5 - 10,5

SULFUR GTX® MEN'S

SULFUR GTX® WOMEN'S



¥ 30,000(税別)
¥ 33,000(税込)



¥ 30,000(税別)
¥ 33,000(税込)



SULFUR GTX® MS
ANTHRACITE - ULTRA ORANGE
COD.: 112506 00 001



SULFUR GTX® MS
DEEP GREY - BLUE GREY
COD.: 112506 00 002



SULFUR GTX® WS
PROGRESSIVE BLUE - BLUE GREY
COD.: 212506 00 001



SULFUR GTX® WS
GREY - LIGHT PETROL
COD.: 212506 00 002

• • • •

Upper: 1,5 mm WR suede leather
Lining: Gore-Tex® Extended Comfort
Footbed: Anatomical, Ortholite®
Midsole: Bi-density compression molded EVA with high rebound compound

Outsole: Vibram® Megagrip™
Weight: 420 g (8 UK / 9 US)
Sizes: UK 6 - 13,5 / US 7 - 14,5

• • • •

Upper: 1,5 mm WR suede leather
Lining: Gore-Tex® Extended Comfort
Footbed: Anatomical, Ortholite®
Midsole: Bi-density compression molded EVA with high rebound compound

Outsole: Vibram® Megagrip™
Weight: 360 g (5 UK / 7 US)
Sizes: UK 3,5 - 8,5 / US 5,5 - 10,5

SULFUR S GTX® MEN'S

SULFUR S GTX® WOMEN'S



¥ 27,000(税別)
¥ 29,700(税込)



¥ 27,000(税別)
¥ 29,700(税込)



SULFUR S GTX® MS
DARK OLIVE - BURNT ORANGE
COD.: 112507 00 001



SULFUR S GTX® MS
SPORT GREY - DARK OLIVE
COD.: 112507 00 002



SULFUR S GTX® MS
GRAPHITE - GREEN
COD.: 112507 00 003



SULFUR S GTX® WS
PROGRESSIVE BLUE - SOFT GREY
COD.: 212507 00 001



SULFUR S GTX® WS
DEEP GREY - LIGHT PETROL
COD.: 212507 00 002

• • • •

Upper: WR synthetic ballistic material
Lining: Gore-Tex® Extended Comfort
Footbed: Anatomical, Ortholite®
Midsole: Bi-density compression molded EVA with high rebound compound

Outsole: Vibram® Megagrip™
Weight: 385 g (8 UK / 9 US)
Sizes: UK 6 - 13,5 / US 7 - 14,5

• • • •

Upper: WR synthetic ballistic material
Lining: Gore-Tex® Extended Comfort
Footbed: Anatomical, Ortholite®
Midsole: Bi-density compression molded EVA with high rebound compound

Outsole: Vibram® Megagrip™
Weight: 335 g (5 UK / 7 US)
Sizes: UK 3,5 - 8,5 / US 5,5 - 10,5

SULFUR S MEN'S

SULFUR S WOMEN'S



¥ 25,000(税別)
¥ 27,500(税込)



¥ 25,000(税別)
¥ 27,500(税込)



SULFUR S MS
GRAPHITE - BURNT ORANGE
COD.: 112508 00 001



SULFUR S MS
TURNED GREY - GREEN
COD.: 112508 00 002



SULFUR S WS
ROSED GREY - WINE BORDEAUX
COD.: 212508 00 002



SULFUR S WS
PETROL - LIGHT PETROL
COD.: 212508 00 003

• • • •

Upper: Synthetic ballistic material
Lining: Sock lining construction in soft mesh
Footbed: Anatomical, Ortholite®
Midsole: Bi-density compression molded EVA with high rebound compound

Outsole: Vibram® Megagrip™
Weight: 375 g (8 UK / 9 US)
Sizes: UK 6 - 13,5 / US 7 - 14,5

• • • •

Upper: Synthetic ballistic material
Lining: Sock lining construction in soft mesh
Footbed: Anatomical, Ortholite®
Midsole: Bi-density compression molded EVA with high rebound compound

Outsole: Vibram® Megagrip™
Weight: 325 g (5 UK / 7 US)
Sizes: UK 3,5 - 8,5 / US 5,5 - 10,5

FIND YOUR ELEMENT

TWO YEARS THAT CHANGED THE WORLD, AND US ALONG WITH IT. THE STATE OF ISOLATION THAT WE WERE FORCED INTO BECAUSE OF THE PANDEMIC HAD A PROFOUND IMPACT ON OUR LIVES AND OUR OUTLOOK. WE SUDDENLY FELT LESS FREE TO IMAGINE AND DREAM, WE WERE LESS FREE TO TRAVEL AND EXPLORE THE WORLD.

AFTER TWO YEARS, THE EASING OF RESTRICTIONS FINALLY MEANT A MOMENT OF NEWFOUND FREEDOM, AS WELL AS AN OPPORTUNITY TO REDISCOVER OURSELVES.

THIS IS WHAT LED US TO EMBARK UPON THIS JOURNEY WITH THE ELEMENTS, BUT ABOVE ALL, WITH OURSELVES.

Photos by Lorenzo Alesi and Alice Linari

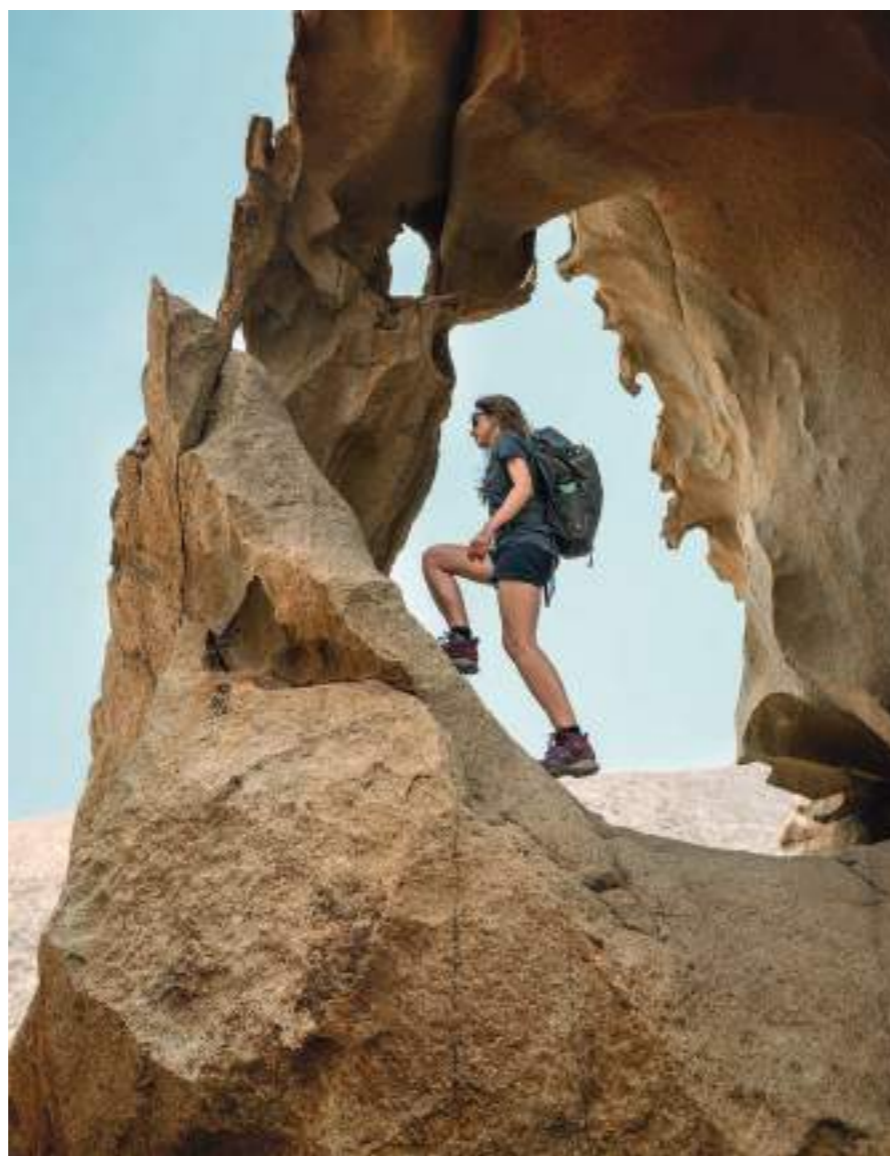
Text by Lorenzo Alesi



We're travelling beyond the mainland once more, and the Canary Islands is our destination.

We don't like the idea of taking flights for our trips, and we have virtually stopped travelling this way, but when it's necessary, to go to another landmass, we take action to offset CO2 emissions by supporting projects aimed at protecting the environment.

FUERTEVENTURA WITH ITS MOUNTAINS AND VOLCANOES IS AN EXTREMELY STRIKING PLACE.



We start exploring the south, in the area of the Jandia Natural Park. From the Mirador de Cofete we climb back up north to reach the Degollada de Cofete. Looking to the west, the contrast between the colours of the ocean and the coast is remarkable.

We walk in environments where the elements of nature unleash their full force. The northernmost viewpoint is battered by strong winds, and clouds gather on the ridge, suggesting that we descend to the valley and head further north.

The scenery is impressive and the colours of the terrain are reminiscent of landscapes in sci-fi films about life on Mars. In general, the landscape that the Natural Monument of the Mountain of Cardon boasts has little in the way of colour contrasts, but is incredibly beautiful in its geomorphological forms.

We treat ourselves to a day of kite surfing before exploring one of the most famous places on the island, Arco de Las Peñitas. The path to reach the arch, which is located at one of the summits of Barranco de Las Peñitas, is steep and not signposted, the temperature is very high and it takes a lot of effort to reach the summit. After about an hour we finally reach the arch: a true natural work of art. The wind and sand have sculpted the stone over the centuries. This orange-red arch contrasting with the blue sky is an image to remember.

As planned, we spend the last few days in the north of the island. Our destination is Caledron Hondo. Climbing to the summit is a unique experience, and in the area there are several other volcanoes, around 50,000 years old. At the highest part of the crater, around 280 metres up, the view of the other volcanoes is really something.

The igneous rock provides an idea of just how much force was released from the earth during the eruptions that created these conical structures that today offer an unparalleled natural landscape.

It is time to return to the mainland, and we are delighted with such an intense experience in an environment that is unusual for us, with temperatures that have been very high at times, rugged terrain, orange-red colours, and no vegetation - a unique experience.



MAGMA 2.0

MAGMA IS DESIGNED TO HIKE, RUN AND SCRAMBLE IN ALL TYPES OF TECHNICAL MOUNTAIN TERRAIN. IT DELIVERS A NEW LEVEL OF GRIP AND PROTECTION IN A LIGHTWEIGHT, COMFORTABLE SHOE.

- PERFECT INDIVIDUAL FIT
- ALL TERRAIN GRIP AND PROTECTION
- DOWNHILL PERFORMANCE AND SHOCK ABSORPTION



MAGMA 2.0 GTX® MEN'S



¥28,000(税別)
¥30,800(税込)



MAGMA 2.0 GTX® MS
DARK PIEDRA - TRUE LAVA
COD.: 112511 00 001



MAGMA 2.0 GTX® MS
NIGHT TIERRA - DUSTY STEPPA
COD.: 112511 00 002



MAGMA 2.0 GTX® MS
SHADOW GIUNGLA - PALE GIUNGLA
COD.: 112511 00 003

• • • •

Upper: 1,6 mm WR suede leather with liquid rubber reinforcement
Lining: Gore-Tex® Extended Comfort
Footbed: Anatomical, Ortholite®
Midsole: Compression molded EVA with high rebound compound + ESS insert plate

Outsole: Vibram® Megagrip™ Litebase™ XO SHIELD
Drop: 8 mm
Weight: 340 g (8 UK / 9 US)
Sizes: UK 6 - 13,5 / US 7 - 14,5

MAGMA 2.0 GTX® WOMEN'S



¥ 28,000(税別)
¥ 30,800(税込)



MAGMA 2.0 GTX® WS
SHADOW PIEDRA - MIDWAY BACCA
COD.: 212511 00 001



MAGMA 2.0 GTX® WS
CALM ALTURA - PURE FIORI
COD.: 212511 00 002

• • • •

Upper: 1,6 mm WR suede leather with liquid rubber reinforcement
Lining: Gore-Tex® Extended Comfort
Footbed: Anatomical, Ortholite®
Midsole: Compression molded EVA with high rebound compound + ESS insert plate

Outsole: Vibram® Megagrip™ Litebase™ XO SHIELD
Drop: 8 mm
Weight: 290 g (5 UK / 7 US)
Sizes: UK 3,5 - 8,5 / US 5,5 - 10,5



MAGMA 2.0 S GTX® MEN'S

MAGMA 2.0 S GTX® WOMEN'S



¥ 26,000(税別)
¥ 28,600(税込)



¥ 26,000(税別)
¥ 28,600(税込)



MAGMA 2.0 S GTX® MS
BLACK - DUSTY LAVA
COD.: 112513 00 001



MAGMA 2.0 S GTX® MS
SOMBER LATERITE - RICH LATERITE
COD.: 112513 00 005



MAGMA 2.0 S GTX® MS
CAMP GREEN - DARK GREY
COD.: 112513 00 007



MAGMA 2.0 S GTX® WS
BLACK - FRESH BACCA
COD.: 212513 00 001



MAGMA 2.0 S GTX® WS
DEEP BACCA - PURE BACCA
COD.: 212513 00 002



MAGMA 2.0 S GTX® WS
LIGHT PETROL - OFF WHITE
COD.: 212513 00 007

• • • •

Upper: Hydrophobic polyamide mesh
Lining: Gore-Tex® Extended Comfort
Footbed: Anatomical, Ortholite®
Midsole: Compression molded EVA with high rebound compound + ESS insert plate

Outsole: Vibram® Megagrip™ Litebase™ XO SHIELD
Drop: 8 mm
Weight: 320 g (8 UK / 9 US)
Sizes: UK 6 - 13,5 / US 7 - 14,5

• • • •

Upper: Hydrophobic polyamide mesh
Lining: Gore-Tex® Extended Comfort
Footbed: Anatomical, Ortholite®
Midsole: Compression molded EVA with high rebound compound + ESS insert plate

Outsole: Vibram® Megagrip™ Litebase™ XO SHIELD
Drop: 8 mm
Weight: 280 g (5 UK / 7 US)
Sizes: UK 3,5 - 8,5 / US 5,5 - 10,5

MAGMA 2.0 S MEN'S

MAGMA 2.0 S WOMEN'S



¥ 23,000(税別)
¥ 25,300(税込)

¥ 23,000(税別)
¥ 25,300(税込)



MAGMA 2.0 S MS
MIDWAY ALTURA - PURE LAVA
COD.: 112515 00 001

MAGMA 2.0 S MS
RICH LAVA - BLACK
COD.: 112515 00 002

MAGMA 2.0 S MS
DEEP BLUE - LIME GREEN
COD.: 112515 00 004

MAGMA 2.0 S WS
CALM LICHENE - LIGHT BACCA
COD.: 212515 00 002

MAGMA 2.0 S WS
DEEP MARE - SOMBER MARE
COD.: 212515 00 004

MAGMA 2.0 S WS
ROSED GREY - WINE BORDEAUX
COD.: 212515 00 005

• • • •

Upper: Breathable 3D mesh
Lining: Soft mesh lycra
Footbed: Anatomical, Ortholite®
Midsole: Compression molded EVA with high rebound compound + ESS insert plate

Outsole: Vibram® Megagrip™ Litebase™ XO SHIELD
Drop: 8 mm
Weight: 310 g (8 UK / 9 US)
Sizes: UK 6 - 13,5 / US 7 - 14,5

• • • •

Upper: Breathable 3D mesh
Lining: Soft mesh lycra
Footbed: Anatomical, Ortholite®
Midsole: Compression molded EVA with high rebound compound + ESS insert plate

Outsole: Vibram® Megagrip™ Litebase™ XO SHIELD
Drop: 8 mm
Weight: 270 g (5 UK / 7 US)
Sizes: UK 3,5 - 8,5 / US 5,5 - 10,5

MAGMA 2.0 MID GTX® MEN'S

MAGMA 2.0 MID GTX® WOMEN'S



¥ 30,000(税別)
¥ 33,000(税込)



¥ 30,000(税別)
¥ 33,000(税込)



MAGMA 2.0 MID GTX® MS
DARK PIEDRA - DUSTY STEPPA
COD.: 112512 00 001



MAGMA 2.0 MID GTX® MS
DARK SAVANA - MIDWAY FIENO
COD.: 112512 00 002



MAGMA 2.0 MID GTX® MS
SOFT GREY - BLACK
COD.: 112512 00 004



MAGMA 2.0 MID GTX® WS
SHADOW PIEDRA - RICH LAGUNA
COD.: 212512 00 001



MAGMA 2.0 MID GTX® WS
NIGHT TIERRA - DEEP BACCA
COD.: 212512 00 002



MAGMA 2.0 MID GTX® WS
LIGHT GREY - RED
COD.: 212512 00 004

• • • • •
Upper: 1,6 mm WR suede leather with liquid rubber reinforcement
Lining: Gore-Tex® Extended Comfort
Footbed: Anatomical, Ortholite®
Midssole: Compression molded EVA with high rebound compound + ESS insert plate

Outsole: Vibram® Megagrip™ Litebase™ XO SHIELD
Drop: 8 mm
Weight: 410 g (8 UK / 9 US)
Sizes: UK 6 - 13,5 / US 7 - 14,5

• • • • •
Upper: 1,6 mm WR suede leather with liquid rubber reinforcement
Lining: Gore-Tex® Extended Comfort
Footbed: Anatomical, Ortholite®
Midssole: Compression molded EVA with high rebound compound + ESS insert plate

Outsole: Vibram® Megagrip™ Litebase™ XO SHIELD
Drop: 8 mm
Weight: 345 g (5 UK / 7 US)
Sizes: UK 3,5 - 8,5 / US 5,5 - 10,5

MAGMA 2.0 S MID GTX® MEN'S



¥ 28,000(税別)
¥ 30,800(税込)

MAGMA 2.0 S MID GTX® WOMEN'S



¥ 28,000(税別)
¥ 30,800(税込)



MAGMA 2.0 S MID GTX® MS
BLACK - PURE LAVA
COD.: 112514 00 002



MAGMA 2.0 S MID GTX® MS
NIGHT GIUNGLA - DUSTY LAVA
COD.: 112514 00 004



MAGMA 2.0 S MID GTX® MS
TURNED GREY - GREEN
COD.: 112514 00 005



MAGMA 2.0 S MID GTX® WS
BLACK - MIDWAY BACCA
COD.: 212514 00 002



MAGMA 2.0 S MID GTX® WS
SHADOW PIEDRA - CLOUDY BACCA
COD.: 212514 00 003



MAGMA 2.0 S MID GTX® WS
BLUE GREY - LIGHT BLUENESS
COD.: 212514 00 005

• • • •
Upper: Hydrophobic polyamide mesh
Lining: Gore-Tex® Extended Comfort
Footbed: Anatomical, Ortholite®
Midssole: Compression molded EVA with high rebound compound + ESS insert plate

Outsole: Vibram® Megagrip™ Litebase™ XO SHIELD
Drop: 8 mm
Weight: 370 g (8 UK / 9 US)
Sizes: UK 6 - 13,5 / US 7 - 14,5

• • • •
Upper: Hydrophobic polyamide mesh
Lining: Gore-Tex® Extended Comfort
Footbed: Anatomical, Ortholite®
Midssole: Compression molded EVA with high rebound compound + ESS insert plate

Outsole: Vibram® Megagrip™ Litebase™ XO SHIELD
Drop: 8 mm
Weight: 320 g (5 UK / 7 US)
Sizes: UK 3,5 - 8,5 / US 5,5 - 10,5

FIND YOUR ELEMENT



Photos by Lorenzo Alesi and Alice Linari
Text by Lorenzo Alesi



Gorner Glacier, Swiss Alps.
Climbing up the left-hand side of the 14km long glacier is a bit like being in a timeless space.
To the south, Breithorn, Pollux, Castor, Lyskamm and Monte Rosa frame it in one of the most beautiful landscapes in the Alps. From Rotenboden, which you can get to with the Gornergrat train, to the Monte Rosa Hut, the trail initially descends gently towards the bed of the glacier. Viewing these 4000 m peaks from below, the peaks that tower above the glacial strip, the peaks that we often ski down, it has a certain effect.

THOSE IMMENSE MASSES OF CONTINUOUSLY MOVING ICE PROVIDE A SENSE OF BELONGING AND A FEELING OF FRAGILITY AT THE SAME TIME.

Having almost reached the bed of the glacier, we begin climbing back up to the Monte Rosa Hut which doesn't take long once we've tackled some sections on fixed ropes and wooden walkways. From here the view is breathtaking. It spans from Monte Rosa to the Gornergrat and the Matterhorn.



The crevasses that mark the bed of the glacier seem to almost make it breathe, making it seem more alive and moving than it already is. The streams that flow through it and the various small lakes that form really give the impression that the ice is melting.

We stay another few minutes and then it's time to go back, to follow those streams because water, in its various forms, is the element of our first stage and from the glaciers we're now moving on to the lakes, one in particular.



Leaving Zermatt, we head towards one of the Alpine lakes that we're most intrigued by: Lake Oeschinen. This is an incredible place, a UNESCO World Heritage Site, an intact Alpine lake fed by glacial streams, perhaps the most beautiful mountain lake we've ever seen. Surrounded by 3000m peaks such as Blüemlisalp, Oeschinenhorn, Fründenhorn and Doldenhorn that are submerged straight into the water and give the lake an incredible look.

A unique place, where the element of water certainly finds its perfect incarnation for us.

FORGE 2.0

THE FORGE 2.0 IS A MODERN LEATHER TREKKING BOOT WITH A WATERPROOF, BREATHABLE GORE-TEX® MEMBRANE AND ANATOMIC FIT. DESIGNED TO PROVIDE VERSATILE DURABLE SUPPORT, COMFORT AND PROTECTION, INCLUDING IN TECHNICAL TERRAINS.



COMFORTABLE SUPPORT AND VERSATILITY



GREAT FIT OUT OF THE BOX ANATOMICAL LAST

Trekking in mountain areas involves covering long distances over rugged terrain. This requires versatile footwear that offers comfortable support, protection and durability.

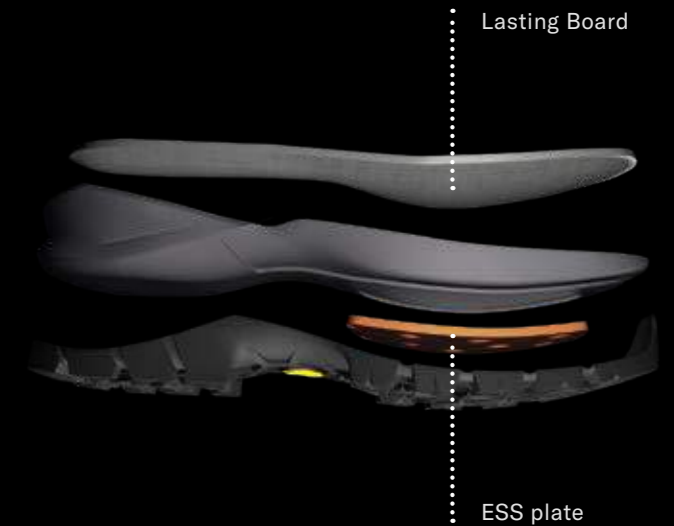
The Forge's upper is built and shaped around an anatomical last, in order to deliver a precise, comfortable fit. It holds the forefoot and heel firmly in place to provide more versatile performance in technical terrain.

SUPPORT AND VERSATILITY

LASTING BOARD AND ESS ROCK PLATE

Sitting on top of the outsole and midsole, the Forge features a polypropylene lasting board that increases stiffness and provides greater support in more technical terrain.

The midsole, made of compressed EVA, benefits from an additional ESS rock plate for protection at the forefoot.



CLASSICAL TONGUE CONSTRUCTION EASY STEP-IN & HIKING COMFORT

The classic tongue and lacing construction is designed to allow an easier step-in, as well as a better forward-back range of motion for the ankle while walking. This is particularly effective on long mountain descents.

VERSATILE GRIP



GRIP

VIBRAM® XS TREK EVO™ SOLE

The Forge 2.0 is equipped with a best-in-class Vibram® XS Trek EVO™ outsole for outstanding grip on a range of wet and dry surfaces in variable conditions. Its dedicated lug pattern ensures multi-directional braking and traction.

ADAPTIVE SOLE DESIGN

Forge 2.0 outsole was inspired by nature and designed for nature.

- Outer lugs for ground adaptability and stability in varied terrains
- Semi climbing zone area for more technical approach performance
- Inner lugs for multidirectional traction
- Self-cleaning channels keep the sole free from debris and mud

EXTERNAL LUGS



INTERNAL LUGS



SEMI-APPROACH AREA



INTERNAL HOLES



TECHNICAL FEATURES



NUBUCK LEATHER

COMFORT AND PROTECTION

The upper of Forge 2.0 is made of high-quality 1.9 mm thick leather, which naturally adapts to the shape of the foot and offers good breathability.

Simultaneously, nubuck leather is extremely hardwearing and ensures high resistance to scratches.

LIGHTWEIGHT RUBBER RAND

EXTENDED PROTECTION AT TOE AND SIDES

The toes and lateral and medial side of the foot are fully protected by a light rubber rand that adds further protection and abrasion resistance against rocks and scree.



WATERPROOFNESS AND BREATHABILITY GORE-TEX®

The Gore-Tex® extended comfort membrane delivers durably waterproof and breathable weather protection to ensure that your feet stay dry and comfortable all day long and all year round.

FORGE 2.0 GTX® MEN'S

FORGE 2.0 GTX® WOMEN'S



¥41,000(税別)
¥45,100(税込)



¥41,000(税別)
¥45,100(税込)



FORGE 2.0 GTX® MS
DEEP GREY - ULTRA ORANGE
COD.: 112509 00 001



FORGE 2.0 GTX® MS
TUNDRA - COOL GREY
COD.: 112509 00 002



FORGE 2.0 GTX® MS
TURNED GREY - GREEN
COD.: 112509 00 003



FORGE 2.0 GTX® WS
DEEP GREY - DARK FUCHSIA
COD.: 212509 00 001



FORGE 2.0 GTX® WS
SOFT GREY - LIGHT PETROL
COD.: 212509 00 002



FORGE 2.0 GTX® WS
DARK AVIO - LIGHT BLUENESS
COD.: 212509 00 003

• • • •

Upper: 1,9 mm WR nubuk leather
Lining: Gore-Tex® Extended Comfort
Footbed: Premolded EVA footbed
Midsole: Compressed EVA with additional lasting board + ESS insert plate

Outsole: Vibram® XS TREK EVO™
Weight: 630 g (8 UK / 9 US)
Sizes: UK 6 - 13,5 / US 7 - 14,5

• • • •

Upper: 1,9 mm WR nubuk leather
Lining: Gore-Tex® Extended Comfort
Footbed: Premolded EVA footbed
Midsole: Compressed EVA with additional lasting board + ESS insert plate

Outsole: Vibram® XS TREK EVO™
Weight: 550 g (5 UK / 7 US)
Sizes: UK 3,5 - 8,5 / US 5,5 - 10,5

FIND YOUR ELEMENT

Photos by Lorenzo Alesi and Alice Linari

Text by Lorenzo Alesi



It's been a while since we've been on a hike in the eastern part of the Sibillini mountains. These are the mountains local to us, but they never cease to amaze us with their beauty and their colours. The idea is to cross the entire range, this time from Monte Sibilla, south to Monte Vettore, then Forca di Presta and Pian Grande.



From the Rifugio Sibilla lodge, which is still closed since the earthquake in 2016, after reaching the pass of Monte Zampa, we begin crossing the ridge with an unrivalled view. To the east there is a view of the Adriatic Sea, and the peaks of the Sibillini mountains to the south, appearing one after another in a natural show of the route we must take. This is definitely the route where the wind whistles the most. Always at altitude, always on steep ridges, to reach Monte Porche.

THE TRAIL BECOMES EASIER WHEN WE CROSS THE PALAZZO BORGHESI AREA TO REACH MONTE ARGENTELLA.

From here, the view over the valley of Lake Pilato makes us reflect on how different this area would have been millions of years ago. The glacial valley of Lake Pilato only has a few snowfields in the summer, in the steep channels protected by the ridges of Redentore. Owing to the water crisis caused by limited rainfall in recent years, the lake is in danger of drying out completely, and with it the small crustaceans native to the area will become extinct.



We continue our route, climbing from Forca Viola up the ridges of Redentore, with Castelluccio di Norcia, the Piana park and the colours of the blossom that paint a natural picture below us to the west. The wind accompanies us along the entire route, blowing constantly from west to east. It lashes the ridges as usual. In the Sibillini mountains it is certainly the dominant element.



We carry on to the new Zilioli lodge and then descend to Forca di Presta at sunset. After setting up in the lodge and having something to eat, we look up. The wind has blown away the clouds rising from the plain, and the sky is almost perfectly clear. The total lack of light pollution, with just a few dim lights twinkling in the villages below, makes it possible to admire the Milky Way with the naked eye. A natural sight that not everyone is lucky enough to witness. The Milky Way fills the celestial vault and dozens of shooting stars cross it, sometimes leaving very long trails.

THE SIBILLINI MOUNTAINS ARE DEFINED AS MAGICAL BECAUSE IT IS ONE OF THE FEW PLACES IN THE WORLD WHERE THE RELATIONSHIP WITH THE ELEMENTS OF NATURE IS TRULY INTENSE.

TECNICA

CLASSIC COLLECTION



KILIMANJARO II GTX® MEN'S



¥ 26,000(税別)
¥ 28,600(税込)



KILIMANJARO II GTX® MS
SHADOW PIEDRA - SOMBER MARE
COD.: 112432 30 008



KILIMANJARO II GTX® MS
SHADOW GIUNGLA - DUSTY CAMPO
COD.: 112432 30 009

• • • •

Upper: 1,6 - 1,8mm WR suede leather, tech nylon
Lining: Gore-Tex® Extended Comfort
Footbed: Premolded foam footbed
Midsole: Die Cut EVA

Outsole: Vibram® Adula 2, XS Trek
Weight: 610 g (8 UK / 9 US)
Sizes: UK 6 - 13,5 / US 7 - 14,5

KILIMANJARO II GTX® WOMEN'S



¥ 26,000(税別)
¥ 28,600(税込)



KILIMANJARO II GTX® WS
MIDWAY DESERTO - SOMBER LAGUNA
COD.: 212432 30 011



KILIMANJARO II GTX® WS
DEEP LAGO - RICH LAGUNA
COD.: 212432 30 012

• • • •

Upper: 1,6 - 1,8mm WR suede leather, tech nylon
Lining: Gore-Tex® Extended Comfort
Footbed: Premolded foam footbed
Midsole: Die Cut EVA

Outsole: Vibram® Adula 2, XS Trek
Weight: 550 g (5 UK / 7 US)
Sizes: UK 3,5 - 8,5 / US 5,5 - 10,5

MAKALU IV GTX® MEN'S



¥22,000(税別)
¥24,200(税込)

MAKALU IV GTX® WOMEN'S



¥22,000(税別)
¥24,200(税込)



MAKALU IV GTX® MS
SHADOW PIEDRA - RICH LAVA
COD.: 112433 30 019



MAKALU IV GTX® MS
SHADOW GIUNGLA - DARK PIEDRA
COD.: 112433 30 020



MAKALU IV GTX® MS
RICH LATERITE - BLACK
COD.: 112433 30 021



MAKALU IV GTX® WS
MIDWAY DESERTO - DARK DESERTO
COD.: 212433 30 025



MAKALU IV GTX® WS
DEEP LAGUNA - RICH LAGUNA
COD.: 212433 30 026

• • • •

Upper: 1,6 - 1,8mm WR suede leather, fabric
Lining: Gore-Tex® Extended Comfort
Footbed: Premolded foam footbed
Midsole: Die Cut EVA

Outsole: Vibram® Adula 2, XS Trek
Weight: 575 g (8 UK / 9 US)
Sizes: UK 6 - 13,5 / US 7 - 14,5

• • • •

Upper: 1,6 - 1,8mm WR suede leather, fabric
Lining: Gore-Tex® Extended Comfort
Footbed: Premolded foam footbed
Midsole: Die Cut EVA

Outsole: Vibram® Adula 2, XS Trek
Weight: 490 g (5 UK / 7 US)
Sizes: UK 3,5 - 8,5 / US 5,5 - 10,5

SIZE TABLE

EU	35	35½	36	36¾	37½	38	38¾	39½	40	40¾	41½	42	42¾	43½	44	44½	45	45¾	46½	47	47¾	
UK	2.5	3	3.5	4	4.5	5	5.5	6	6.5	7	7.5	8	8.5	9	9.5	10	10.5	11	11.5	12	12.5	
US MEN								7	7.5	8	8.5	9	9.5	10	10.5	11	11.5	12	12.5	13	13.5	14
US WOMEN		5	5.5	6	6.5	7	7.5	8	8.5	9	9.5	10	10.5									

•
•
•
•
•

45280600 002 TEC. FOOTWEAR CAT. SS23 EN



8 050459 990645

TECNICA GROUP S.P.A. VIA FANTE D'ITALIA 56,
31040 GIAVERA DEL MONTELLO (TV) ITALY

DATE OF PRINT: MAY 2022

BLIZZARD-TECNICA.COM